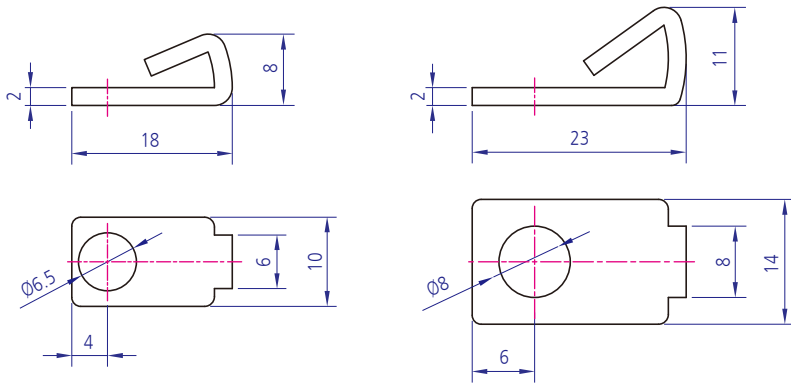


### Technical Data

Material	STEEL(SPCC)
Surface Processing	NI(니켈) - 동근렌지볼트 6x15, 8x20
Application	직각 조립용 30용, 40용 앤드캡 삽입시 간섭방지용으로 사용됨.

## JOINT CLIP YKJC-E(END형)



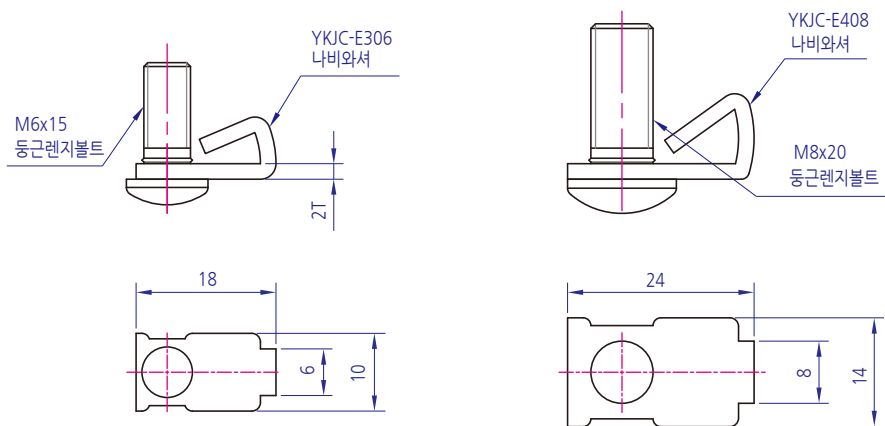
YKJC-E D306

YKJC-E D408

### Technical Data

Material	STEEL(SPCC)
Surface Processing	NI(니켈) - 동근렌지볼트 6x15, 8x20
Application	직각 조립용 30용, 40용 앤드캡 삽입시 간섭방지용으로 사용됨.

## JOINT CLIP YKJC-EI (일체형)



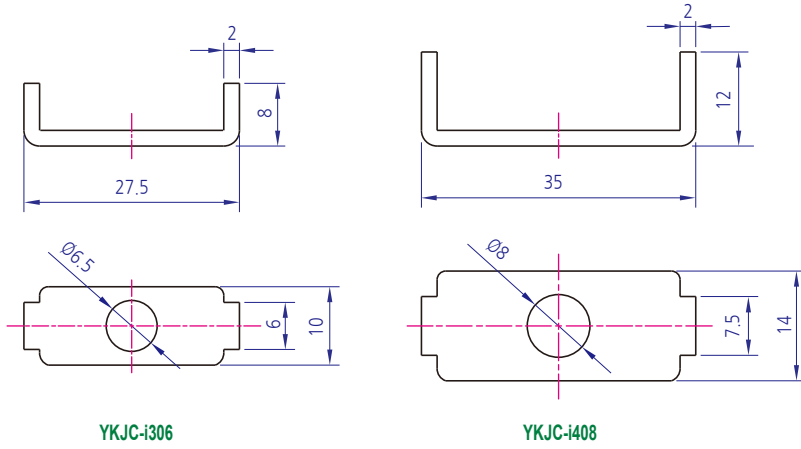
- Roller
- Bearing Holder
- Motor Base
- Bracket
- Hanger Shaft
- Multi Block
- Joint**
- Hinge
- Magnet
- Handle
- Foot Base
- Leveling Foot
- Cover
- End Cap
- Bolt
- Nut
- Washer
- Special
- Profile
- Caster
- 금형

## JOINT CLIP YKJC-I(1형)



### Technical Data

Material	STEEL(SPCC)
Surface Processing	NI(니켈)
Application	직각 조립용 30용, 40용

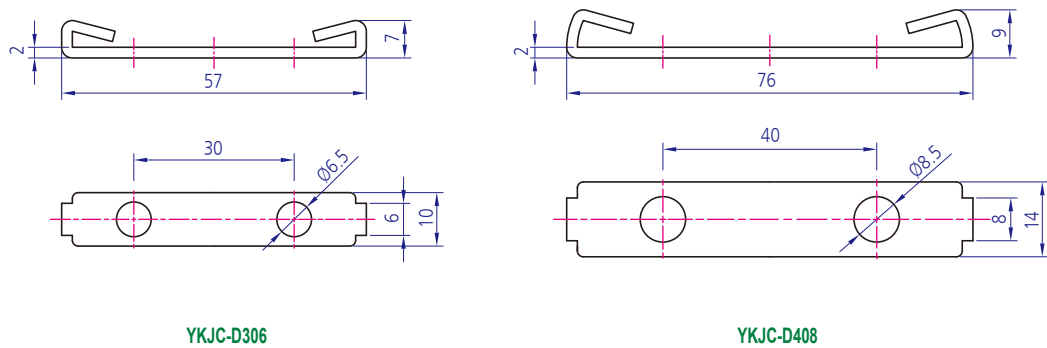


## JOINT CLIP YKJC-D(DOUBLE형)



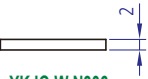
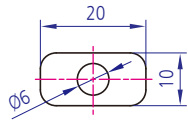
### Technical Data

Material	STEEL(SPCC)
Surface Processing	NI(니켈) - 8x20 : 2EA
Application	직각 조립용 60용, 80용

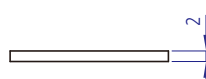
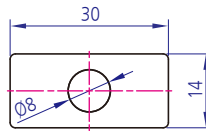


### Technical Data

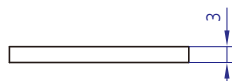
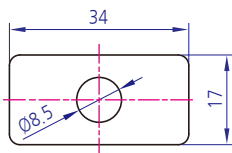
Material	STEEL(SPCC)
Surface Processing	NI(니켈)
Application	직각 조립용(와셔형)



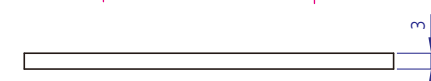
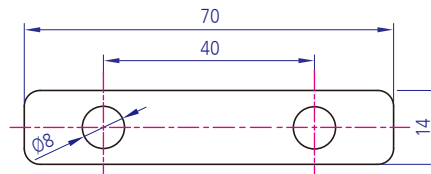
YKJC-W N306  
(NWM0601)



YKJC-W G408

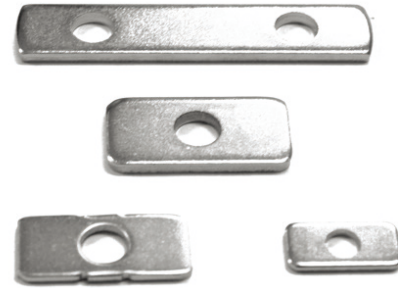


YKJC-W N408  
(NWM0801)



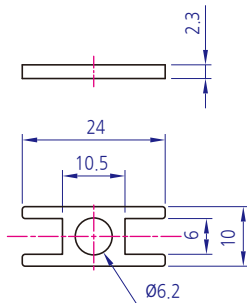
YKJC-W D408

### JOINT CLIP YKJC-W(와셔형)

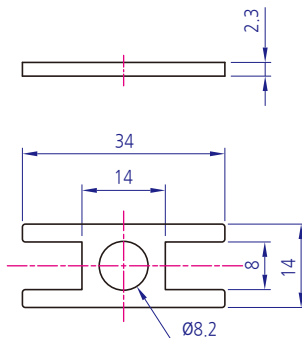


### Technical Data

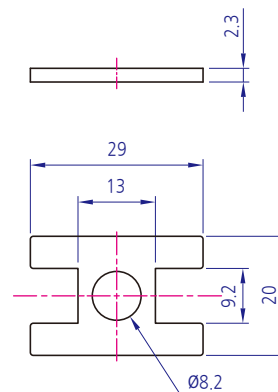
Material	STEEL(SPCC)
Surface Processing	NI(니켈)
Application	직각 조립용(와셔형)



YKJC-W G306-C



YKJC-W G408-C



YKJC-W G408-CL (경량형)

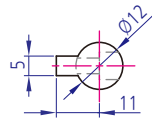
### JOINT CLIP YKJC-W (C형)



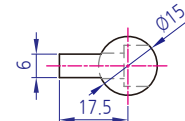
## UNIVERSAL JOINT YKUJ-G(표준형)

### Technical Data

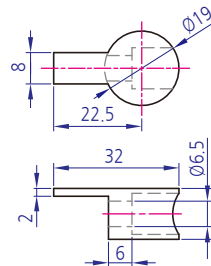
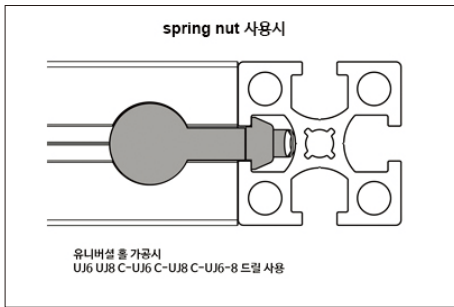
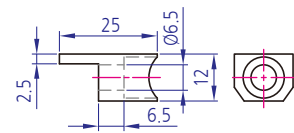
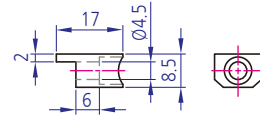
Material	ZINC ALLOY
Surface Processing	NI(니켈) — 육각렌지볼트 4x18, 6x25, 8x30
Application	수평, 수직 연결용 20, 30, 308, 40용



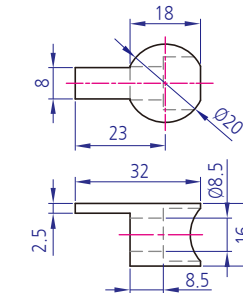
YKUJ-G205



YKUJ-G306



YKUJ-G356

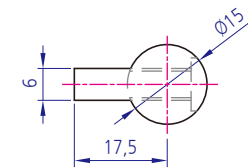
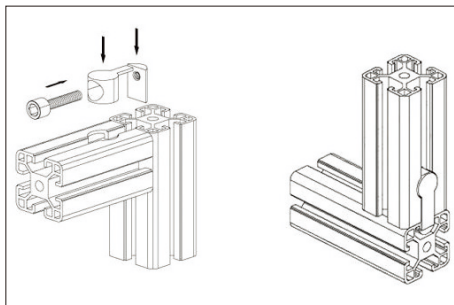


YKUJ-G408

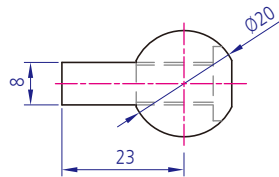
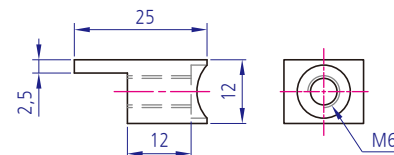
## UNIVERSAL JOINT YKUJ-T (TAP형 Series)

### Technical Data

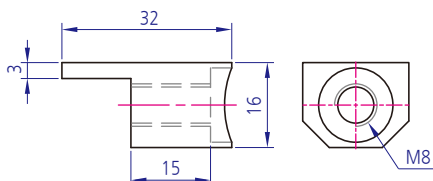
Material	ZINC ALLOY
Surface Processing	NI(니켈)
Application	수평, 수직 연결용 30,40용



YKUJ-T306



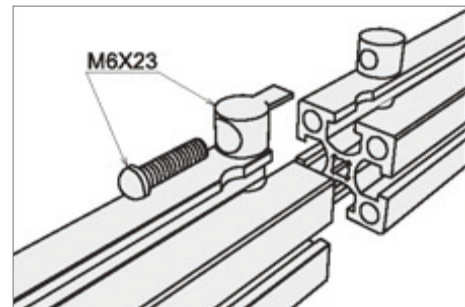
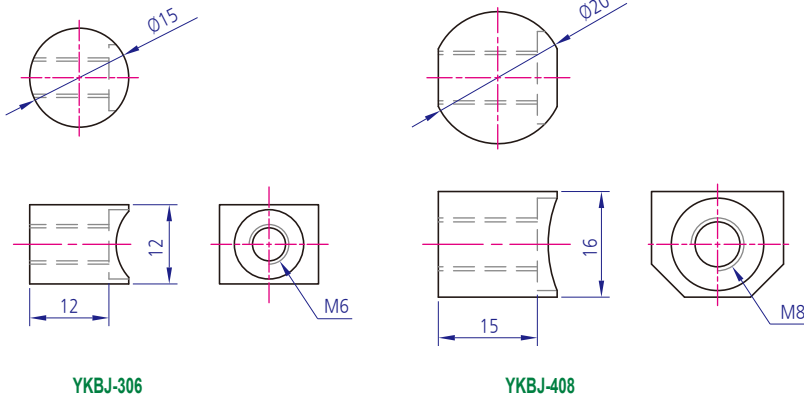
YKUJ-T408



### Technical Data

Material	ZINC ALLOY
Surface Processing	NI(니켈)
Application	수평 연결용 30,40용

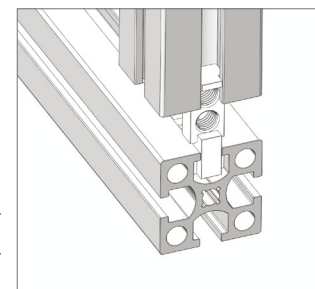
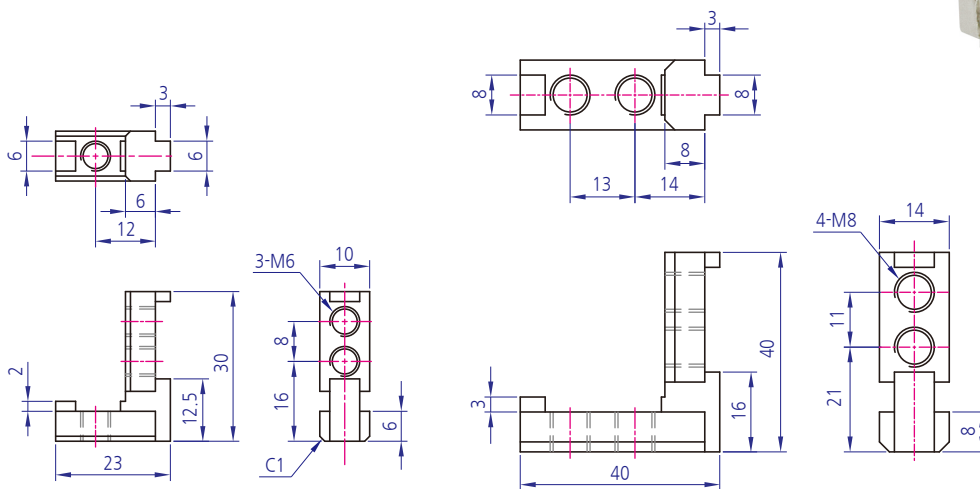
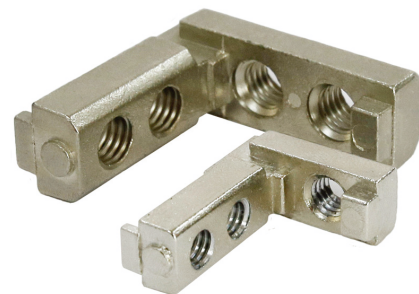
## BUTT JOINT YKBJ Series



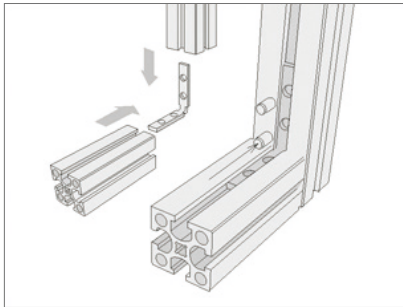
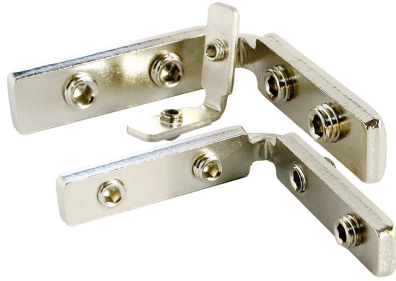
### Technical Data

Material	ZINC ALLOY
Surface Processing	NI(니켈)
Application	브라켓 없이 조립

## INNER BRACKET YKIB-D30x22, 40x35(대용용)

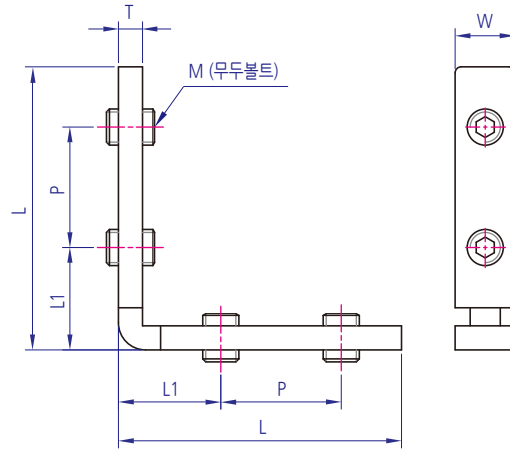


## INNER BRACKET YKIB-G (직각형)



### Technical Data

Material	SPHC
Surface Processing	NI(니켈)
Application	브라켓 없이 조립



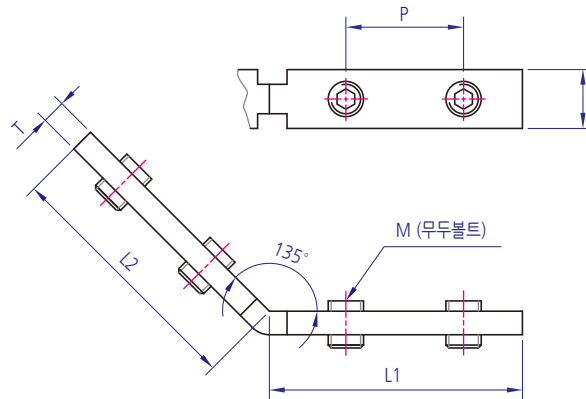
규격	L	L1	T	P	W	M	Material	Plating
YKIB-G205	25	15	2	-	8	5	SPHC	NI
YKIB-G M205	25	15	3	-	8	5		
YKIB-G306	47	17	4	20	10	6		
YKIB-G408	60	25	5	20	14	8		

## INNER BRACKET YKIB-G/O(각도형)



### Technical Data

Material	SPHC
Surface Processing	NI(니켈)
Application	브라켓 없이 조립



규격	L1	L2	T	P	W	M	Material	Plating
YKIB-O205-135	25	25	2	-	8	5	SPHC	NI
YKIB-O M205-135	25	25	3	-	8	5		
YKIB-O306-135	43	43	4	20	10	6		
YKIB-O408-135	54	54	5	20	14	8		
YKIB-O306-135 (삽입형)	40	46	4	20	10	6		
YKIB-O408-135 (삽입형)	48	60	5	20	14	8		